

# ASMARA



MEGAWORLD  
INTERNATIONAL

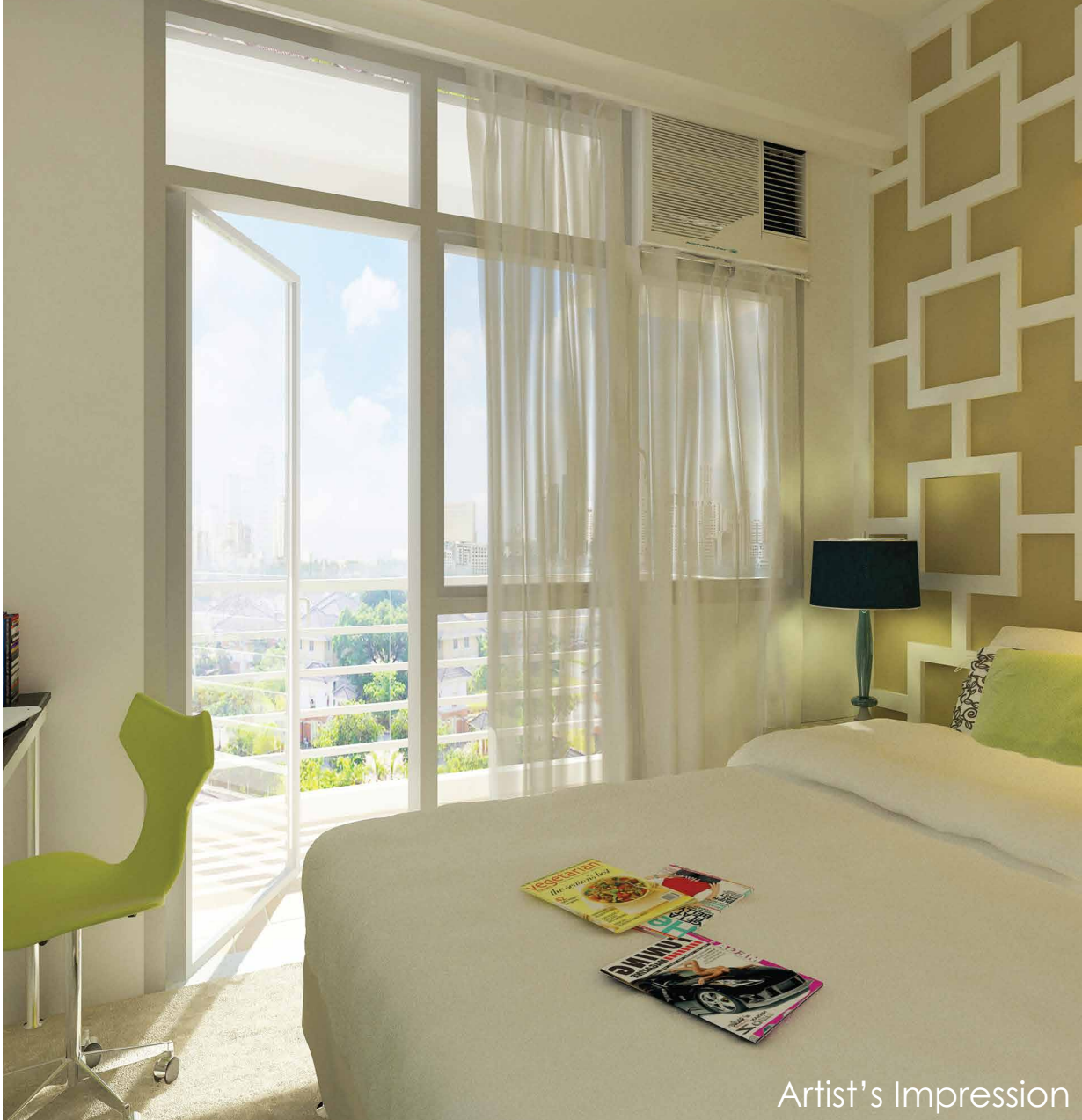
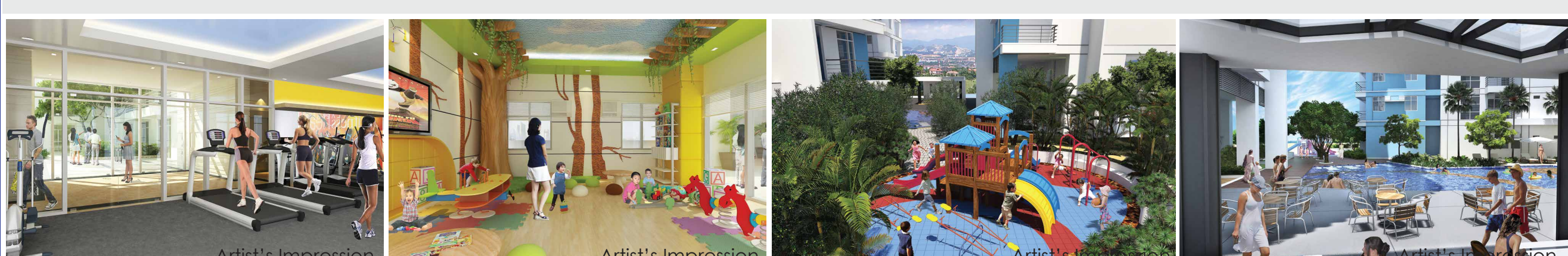
PROJECT FEATURES

TOTAL LAND AREA		
<b>7,685</b> sq. m.		
THEME		
Modern Contemporary		
<b>3</b> TOWERS	<b>1,975</b> UNITS	
<b>31</b> FLOORS TOWER 1	<b>32</b> FLOORS TOWER 2	<b>34</b> FLOORS TOWER 3



PROJECT AMENITIES

- 20-meter lap pool
- Pool lounge
- Kiddie pool
- Paved sunbathing/pool deck
- Kid's play area
- Zen garden
- Outdoor lounge
- Gazebo-type multi-purpose area
- Daycare
- Male and Female changing/shower rooms
- Outdoor shower
- Function rooms
- Jogging path
- Gate and guardhouse



- Studio Units**
- Ceramic tiles in living, dining and kitchen
  - Ceramic tiles in toilet and baths
  - Custom-built under counter kitchen cabinets (overhead cabinets not included)
  - Kitchen with mechanical ventilation
  - Toilet & bath with mechanical or natural ventilation
  - Provision for ACU opening in bedrooms



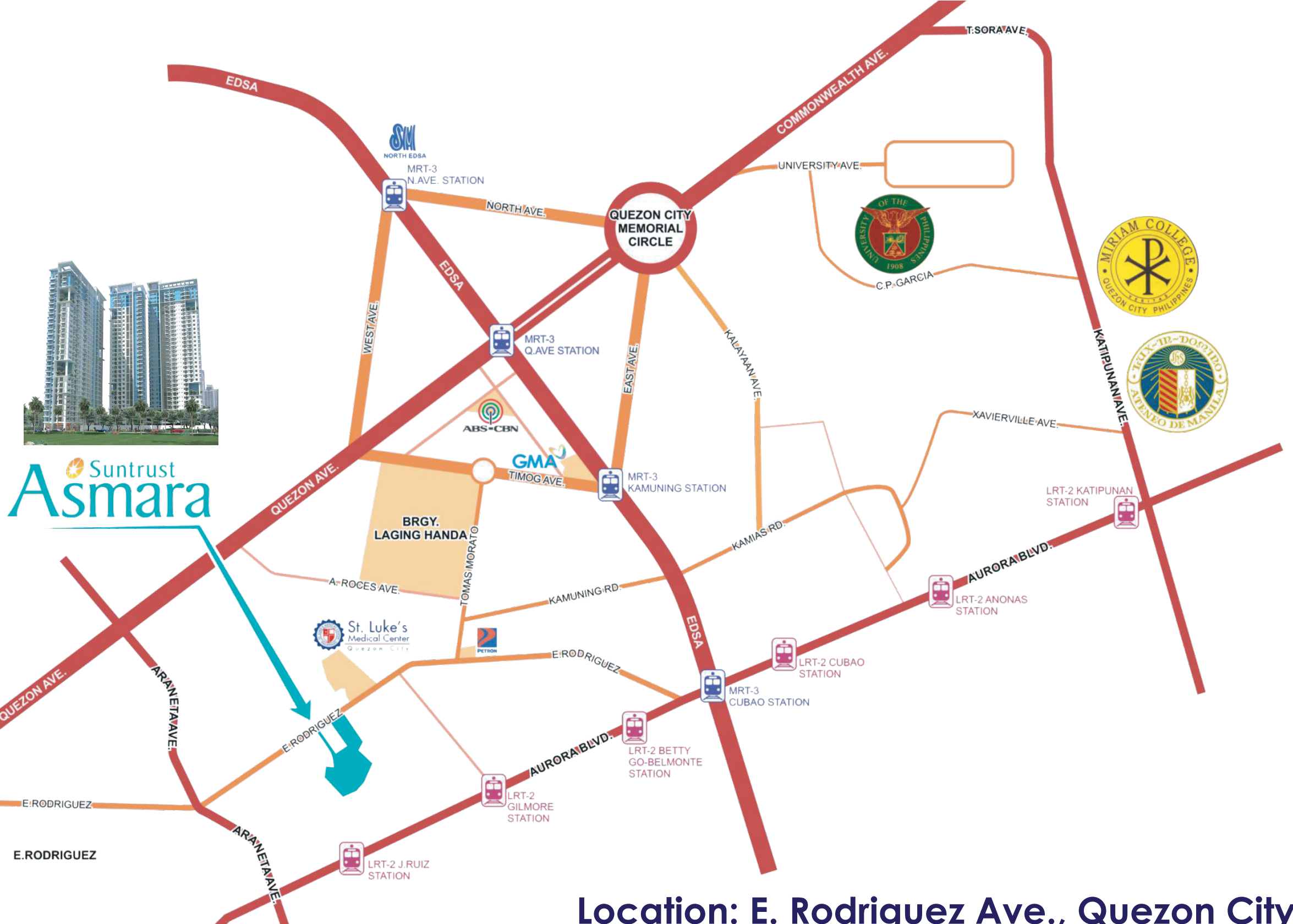
- One Bedroom Units**
- Ceramic tiles in living, dining and kitchen
  - Vinyl planks in bedrooms
  - Ceramic tiles in toilet and baths
  - Custom-built under counter kitchen cabinets (overhead cabinets not included)
  - Kitchen with mechanical ventilation
  - Toilet & bath with mechanical or natural ventilation
  - Provision for ACU opening in bedrooms

- Two Bedroom Units**
- Ceramic tiles in living, dining and kitchen
  - Vinyl planks in bedrooms
  - Ceramic tiles in toilet and baths
  - Custom-built under counter kitchen cabinets (overhead cabinets not included)
  - Kitchen with mechanical ventilation
  - Toilet & bath with mechanical or natural ventilation
  - Provision for ACU opening in bedrooms

- Three Bedroom Units**
- Ceramic tiles in living, dining and kitchen
  - Vinyl planks in bedrooms
  - Ceramic tiles in toilet and baths
  - Custom-built under counter kitchen cabinets (overhead cabinets not included)
  - Kitchen with mechanical ventilation
  - Toilet & bath with mechanical or natural ventilation
  - Provision for ACU opening in bedrooms

UNIT SIZE	STUDIO UNIT	1BR UNIT	2BR UNIT	3BR UNIT
	26.95 - 28.95 sq. m.	35.50 - 38.80 sq. m.	39.00 - 54.20 sq. m.	56.70 - 57.70 sq. m.

LOCATION MAP



Location: E. Rodriguez Ave., Quezon City

LOCATION ADVANTAGE

<p><b>01</b> ✓</p> <p>Proximity to a lot of national government offices, churches, commercial centers and other community establishments and public facilities</p>	<p><b>02</b> ✓</p> <p>Near to business and leisure centers, amusement parks and event venues i.e. Araneta Coliseum, a venue for concerts as well as sports events.</p>	<p><b>03</b> ✓</p> <p>Near the stretch of Tomas Morato and Timog Avenues which are the heart of fine dining restaurants, bars and entertainment pubs.</p>	<p><b>04</b> ✓</p> <p>Minutes away to commercial hubs i.e. Araneta Center, Greenhills Shopping Center.</p>
--	--	---	--

NEARBY PLACES OF INTEREST

<p><b>MARKETS / BUSINESS CENTERS</b></p> <ul style="list-style-type: none"> <li>• Greenhills Shopping Center</li> <li>• Trinoma</li> <li>• Waltermart E. Rodriguez</li> <li>• Robinsons Magnolia</li> <li>• SM Megamall</li> <li>• Araneta Center</li> <li>• Quezon City Sports Club</li> <li>• Shangri-La Mall</li> <li>• Megamall</li> <li>• Ortigas Business District</li> </ul>	<p><b>SCHOOLS</b></p> <ul style="list-style-type: none"> <li>• Trinity University of Asia</li> <li>• St. Joseph College</li> <li>• St. Paul University</li> <li>• La Salle Greenhills</li> <li>• Poveda</li> </ul>
<p><b>CHURCHES</b></p> <ul style="list-style-type: none"> <li>• Our Lady of Mt. Carmel Shrine</li> <li>• Christ the King Church</li> </ul>	<p><b>HOSPITALS</b></p> <ul style="list-style-type: none"> <li>• St. Luke's Medical Center</li> <li>• National Children's Hospital</li> <li>• The Medical City</li> </ul>